



Open access – policy, progress, prospects

Steven Hill
Director of Research

12 September 2018
ALPSP Conference

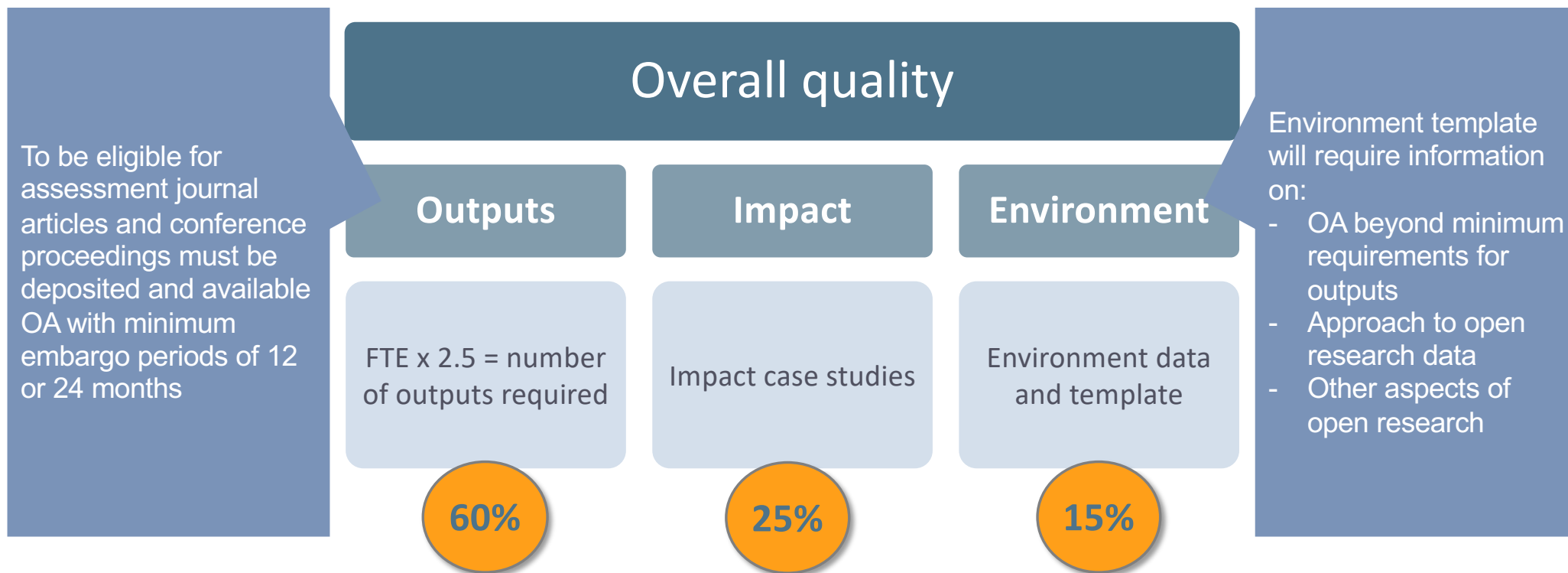




The UK policy landscape

- 2012 – Finch Review
- Journal articles/conference proceedings
 - RCUK (now UKRI); outputs relating to projects
 - Wellcome and other research charities; outputs relating to projects
 - Research Excellence Framework; outputs for assessment
- 2015 – Crossick report on OA monographs and long-form outputs
- Monographs
 - Wellcome; outputs relating to projects
 - Research Excellence Framework; not required, but credit for progress. Future direction of travel

The Research Excellence Framework (REF) and open research



National progress towards open access

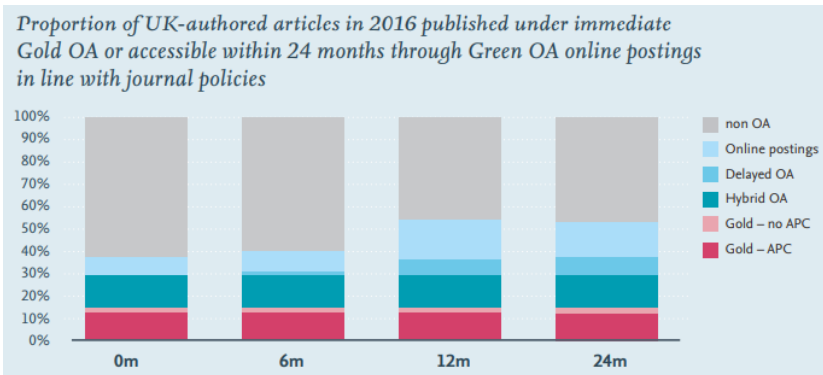
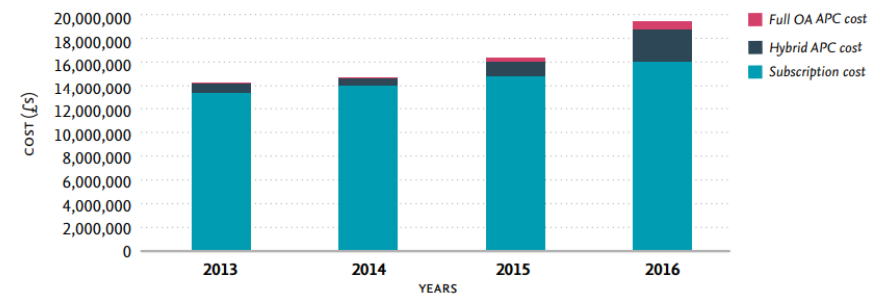
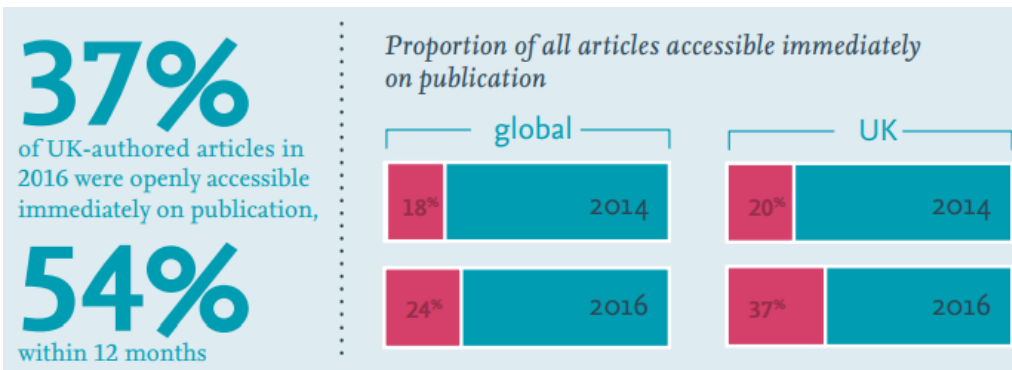
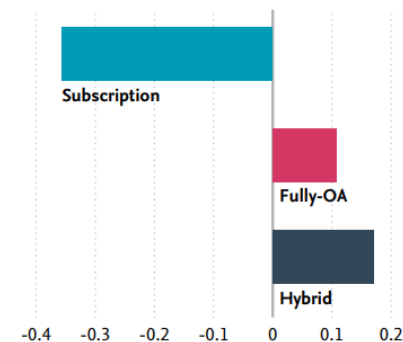


Figure 4.3 – Total subscription and APC expenditure, 2016*

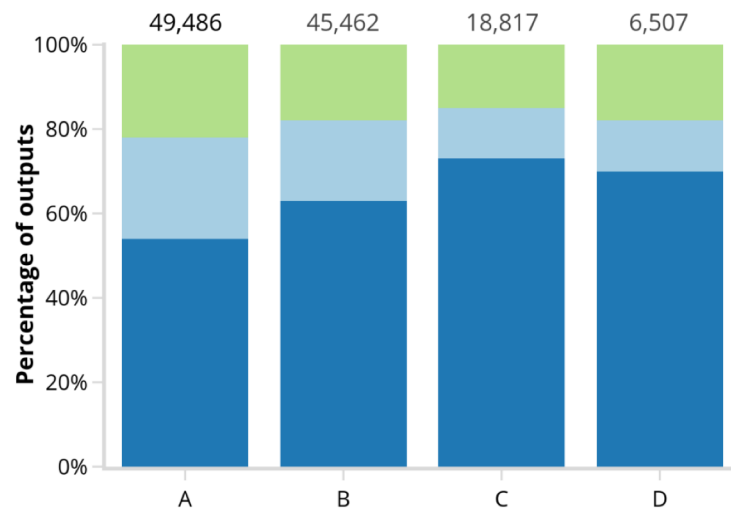


* in £s, 10 institutions: Cranfield University, King's College London, Queen Mary University of London, Royal Holloway – University of London, Swansea University, University of Birmingham, University of Cambridge, University of Glasgow, University of Liverpool, University of Sussex; and 7 publishers: Elsevier, Wiley, Springer, Taylor & Francis, Sage, Institute of Physics, Royal Society of Chemistry

Figure 1.2.3 – Changes in categories of journals from 40 publishers, 2015 to 2017



REF policy compliance



REF 2014 main panel

- Meet or expected to meet deposit, discovery and access requirements
- An exception is known to apply
- Do not meet deposit, discovery and access requirements and not known to be covered by an exception

- For the 1st year of the policy (April 2016 – March 2017):

- 61% of eligible outputs meet the full policy requirements
- 20% of outputs have valid exceptions
- 86% of exceptions are the deposit exception for 'gold'
- 19% don't meet requirements – many already determined as not being submitted for assessment



Where next?

- UKRI review of OA policy
- ‘Plan S’
- Beyond REF 2014 (from 1 Jan 2021):
 - Changes to journal article policy?
 - Monographs and other long-form outputs

Steven Hill
Director of Research

☎ 0117 931 7334
✉ steven.hill@re.ukri.org
🐦 @ResEngland
@stevenhill
🌐 www.ukri.org/re



**Research
England**